

Gateway Theatre 2016-2017 SEASON

MORE *than* ENTERTAINMENT



Secure Your Seats—Subscribe Today!

604.270.1812 • gatewaytheatre.com



**GATEWAY
THEATRE**

ESSENTIAL STORIES, LIVE ONSTAGE

Subscribe and save up to 18% — *Pages 10 and 11*

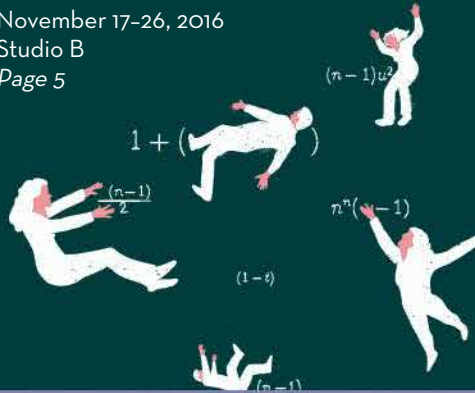
KING OF THE YEES

October 13-22, 2016
MainStage
Page 4



LONG DIVISION

November 17-26, 2016
Studio B
Page 5



Meredith Willson's THE MUSIC MAN

December 8-31, 2016
MainStage
Page 6



YOU WILL REMEMBER ME

February 2-11, 2017
MainStage
Page 7



THE PIPELINE PROJECT

March 9-18, 2017
Studio B
Page 8



THE WATERSHED

April 6-15, 2017
MainStage
Page 9





Welcome to Gateway Theatre's 2016/2017 Season!

This may be my favourite season to date. The plays we're presenting are fresh and vital and relevant to today's Lower Mainland. Best of all, four of our six plays are BC premieres.

Each play this season showcases the work of extraordinary actors, directors, and designers. Each piece has something meaningful to say about the world in which we live.

If you've been to Gateway before, you know that we produce excellent plays that speak to hearts and minds. Our plays will make you laugh, bring a tear to your eye, compel you to tap your toes, or leave you thinking about things in a different light. That's the magic of live theatre.

If you haven't been here before, I invite you to experience that magic for yourself. At Gateway, we're proud of the shows we do and we'd love to share them with you.

By subscribing, you can secure the best seats in the house and save up to 18% on single ticket prices, plus get additional valuable benefits.

I look forward to seeing you at Gateway!

Jovanni Sy

ARTISTIC DIRECTOR

Be Part of Our Season

gatewaytheatre.com/subscribe

OCTOBER 13-22, 2016 • MAINSTAGE

KING OF THE YEEs

By Lauren Yee • Directed by Sherry J. Yoon • Produced by special arrangement with Goodman Theatre in Chicago, Illinois

A madcap adventure in search of family and cultural identity

Her father's sudden disappearance catapults the intrepid Lauren Yee on a fantastic journey through the heart of San Francisco's Chinatown, where she confronts a world both foreign and familiar. At once biting hilarity and heartbreakingly honest, **King of the Yees** is an epic joyride across a cultural and generational divide, grounded by a powerful story about the relationship between fathers and daughters.

"Yee is a talented young writer... [her] voice is absolutely worth a listen."

—Martin Denton, nytheatre.com



NOVEMBER 17-26, 2016 • STUDIO B

WORLD
PREMIERE

LONG DIVISION

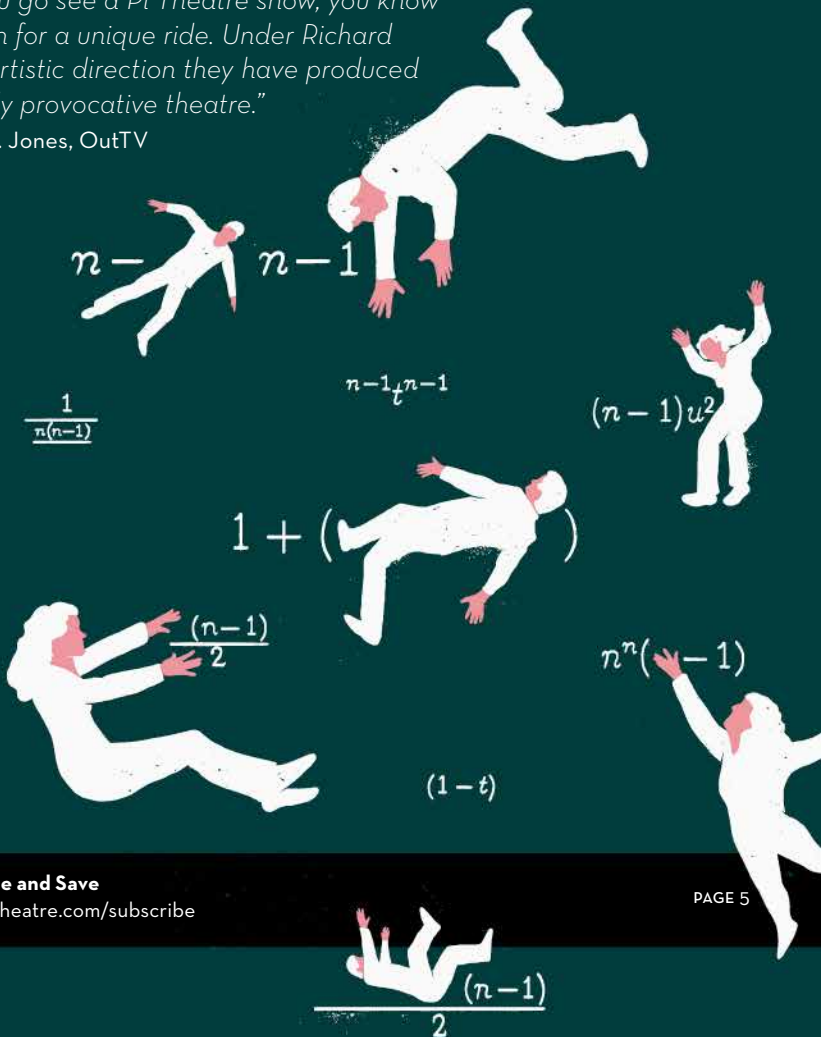
By Peter Dickinson • Directed by Richard Wolfe • A Pi Theatre production
in association with Gateway Theatre

A strikingly imagined collision between seven individuals

One of Vancouver's boldest theatre companies premieres a thoughtful and resonant multimedia experience about the mathematics of human connection. In **Long Division**, seven characters struggle to explain their tragic entanglement using the language of geometry and logic, but find that one emotional variable consistently remains unsolved.

"When you go see a Pi Theatre show, you know you are in for a unique ride. Under Richard Wolfe's artistic direction they have produced some truly provocative theatre."

—David C. Jones, OutTV



Subscribe and Save
gatewaytheatre.com/subscribe

PAGE 5

DECEMBER 8-31, 2016 • MAINSTAGE

Meredith Willson's

THE MUSIC MAN

Book, Music and Lyrics by Meredith Willson • Story by Meredith Willson and Frank Lacey • Directed by Barbara Tomasic • Musical Direction by Christopher King • Choreography by Julie Tomaino

Winner of 5
Tony Awards,
Including
Best Musical

The rousing classic about a charming con man and his seventy-six trombones

This beguiling and nostalgic family musical begins when fast-talking con man Harold Hill arrives in small town Iowa, singing empty promises about starting a glorious marching band to organize the local youth. Although all the townsfolk seem eager to follow his lead, the prim local librarian, Marian, threatens to reveal him as a fraud. As the two butt heads, sparks fly, inspiring Harold to change his tune. Romantic and completely clever, **The Music Man** is a heart-warming story about personal redemption and the power of a big brass band.

"The Music Man is a marvelous show, rooted in wholesome and comic tradition."

—The New York Times



FEBRUARY 2-11, 2017 • MAINSTAGE

YOU WILL REMEMBER ME

From the play *Tu te souviendras de moi* by François Archambault

Translated by Bobby Theodore • Directed by Diane Brown

A Ruby Slippers Theatre production

A wistful and wise drama about the unexpected and unforgettable

You Will Remember Me is the compassionately told story of an ageing intellectual beset with dementia, whose family splinters in their efforts to support him. As he is shuffled between frustrated caregivers, the resilient patriarch begins to reflect on how each of them will remember him after he passes away. Peppered with bittersweet humour, this is a deeply personal and moving new play by one of Québec's most compelling writers.

*"There's a kind of genius in
You Will Remember Me.
Director Diane Brown
and her team do
an excellent job
with this script."*

—Colin Thomas,
The Georgia Straight



Don't Miss Out!

gatewaytheatre.com/subscribe

PAGE 7

MARCH 9-18, 2017 • STUDIO B

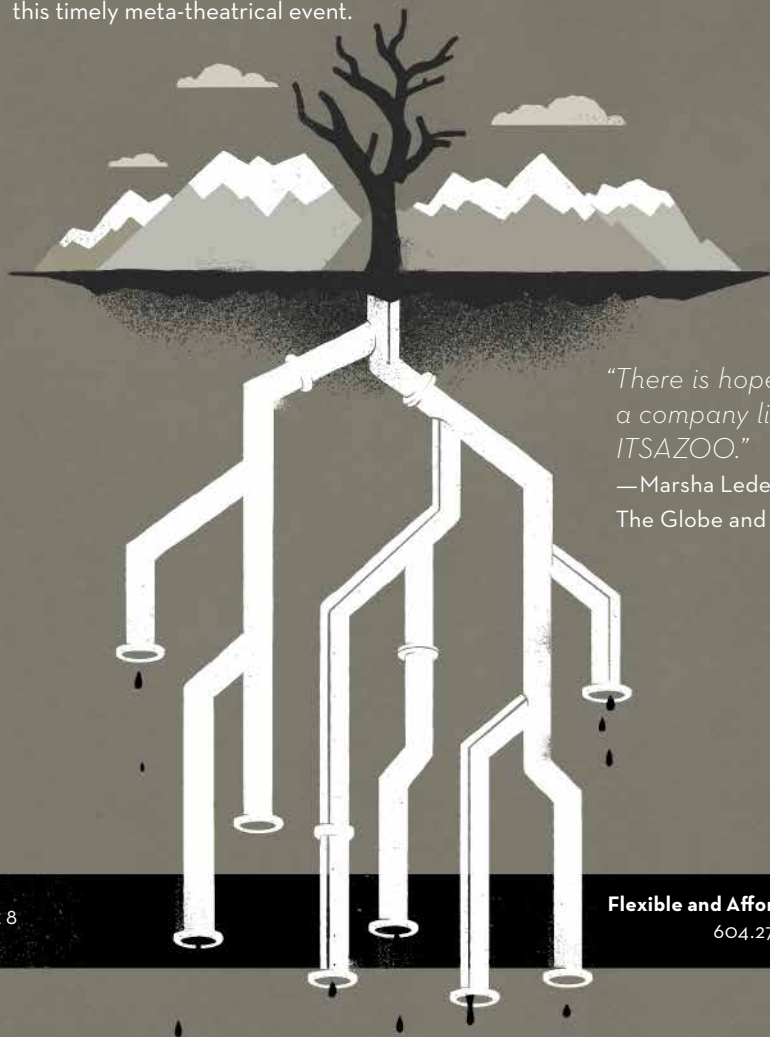
WORLD
PREMIERE

THE PIPELINE PROJECT

By Sebastien Archibald, Kevin Loring, and Quelema Sparrow • Directed by Chelsea Haberlin • ITSAZOO Productions and Savage Society in association with Gateway Theatre and Newworld Theatre

A provocative and comedic foray into a firestorm of debate

In ***The Pipeline Project***, immersive theatre company ITSAZOO and aboriginal performance company Savage Society bring to life a vibrant and personal account of the ongoing political battles over the Trans Mountain and Northern Gateway pipelines. Peak oil, First Nations land claims, and climate change are all explored with humour and empathy in this timely meta-theatrical event.



“There is hope in a company like ITSAZOO.”

—Marsha Lederman,
The Globe and Mail

APRIL 6-15, 2017 • MAINSTAGE

BC
PREMIERE

THE WATERSHED

By Annabel Soutar • Directed by Chris Abraham • Co-produced by Porte Parole (Montreal) and Crow's Theatre (Toronto)

A rollicking road trip in pursuit of a nation's disappearing lifeblood

Celebrated documentary theatre artist Annabel Soutar (the creator of *Seeds*) leads her family on a cross-Canada journey, probing the forces that are shaping the future of our dwindling natural resources. By innovatively dramatizing an eclectic and insightful set of interviews with scientists, government officials, activists and business leaders, ***The Watershed*** deftly documents a nation struggling to find the balance between environment and industry.



*"Whatever end of the political
The Watershed is must-see*

*spectrum you're on,
theatre."* —NOW Magazine

Save up to 18%
gatewaytheatre.com/subscribe

PAGE 9



SUBSCRIBE FOR THIS TRANSFORMATIONAL NEW SEASON!

Secure the very best seats in the house for our beloved holiday musical and these extraordinary premieres.



THEATRE LOVER – *All six shows in our 2016/2017 season*

Price Zone 1 • Premium Seating

\$228

Price Zone 2

\$199

MAINSTAGE – *All four shows on our MainStage*

King of the Yees, The Music Man, You Will Remember Me, and The Watershed

Price Zone 1 • Premium Seating

\$187

Price Zone 2

\$156

SUBSCRIBER BENEFITS

- **Best Seats in the House** – Really want an aisle seat? Want to see the actors' faces up close? When you subscribe you get to choose the best seats available, well before anyone else has the opportunity.
- **Free Parking** – See some of the best theatre in the Lower Mainland without all the fuss of going downtown and trying to park. Subscribers at Gateway receive complimentary parking passes for the lots next to the theatre.
- **Flexibility with Complimentary Exchanges** – You lead a busy life, and it's not always easy to pick one performance in advance and stick with it. When you subscribe at Gateway, you're welcome to change your tickets to a different performance whenever you'd like, at no charge.
- **Discounts for Friends and Family** – The more, the merrier! Subscribers can pre-book additional tickets for friends and family at discounted prices.

GETTING YOUR SEASON TICKETS IS EASY!

Don't miss out on this season of essential stories.

1 Choose your performance series:

1st Week:			THUR 8pm	FRI 8pm	SAT 2pm 8pm	SUN 2pm (<i>MainStage only</i>)
2nd Week:	TUES 1pm 8pm	WED 8pm	THUR 8pm	FRI 8pm	SAT 8pm	

2 Choose your subscription package:

Theatre Lover or *MainStage*

3 Choose your seating section:

- Price Zone 1 – *Premium Seating*
- Price Zone 2



4 Complete your order:

Call 604.270.1812 to pay with a credit card; submit a form (online at gatewaytheatre.com/subscribe); or visit us in person at the Box Office. We're open Monday-Friday from noon-6pm, and Saturdays from 2pm-6pm.

Don't Wait!
604.270.1812





Please note that all programming is subject to change.

PAGE 11



ESSENTIAL STORIES, LIVE ONSTAGE

Gateway Theatre
6500 Gilbert Road
Richmond, BC V7C 3V4
604.270.1812
gatewaytheatre.com

-  [GatewayTheatreBC](#)
-  [Gateway_Theatre](#)
-  [GatewayTheatreRichmond](#)
-  [Gateway_Theatre](#)



GATEWAY
THEATRE